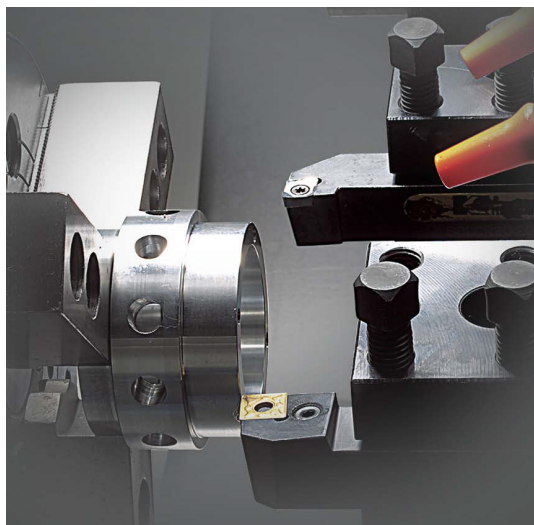


KIT Series



Automation/Process Integration, Easy to Operate Gang Type Lathes

- Variety Accessories, Robot System Application (ex: KN Robot)
- Variety Optional figures are available, Auto Loader/Bar Feeder / Parts Catcher etc.
- Slant bed design gives better access to tool holder, and chuck.
Also, this design is more efficient to remove chips.
- Locate chip box at the front or sides
- For operator's convenient, multi purpose tool box and used lubrication collect box are equipped



Spindle & Block Tool

Gang Type Block Tool

With maximization of machine running time with the tool selection time saved, the productivity has been improved during production processing process for small sized parts.

Specifications

ITEM			KIT400	KIT450
CAPACITY	Swing Over the Bed	mm(in)	ø 510 (20.1")	ø 530 (20.9")
	Max. Turning Dia.	mm(in)	ø 165 (6.5")	
	Max. Turning Length	mm(in)	270 (10.6")	325 (12.8")
	Bar Capacity	mm(in)	ø 45 (1.8")	
SPINDLE	Chuck Size	mm(in)	ø 165 (6.5")	
	Spindle Bore	mm(in)	ø 54 (2.13")	ø 52 (2.05") [ø 53 (2.09")]
	Spindle Speed (rpm)	r/min	60~6,000	50~6,000
	Motor (Max/Cont.)	kW(HP)	11/7.5 (15/10) [12.5/7 (17/9.4)]	15/11 (20/15) [12/9 (16/12)]
	Torque (Max/Cont.)	N.m	70/47 [92.8/52]	95.5/70 [76.4/57.3]
	Spindle Type	–	BELT	
	Spindle Nose	–	A2-5	
FEED	Travel (X/Z)	mm(in)	400/250 (15.7"/9.8")	450/300 (17.7"/11.8")
	Rapid Travel (X/Z)	m/min	30/36	
	Slide Type	–	LM GUIDE	
BLOCK TOOL	No. of Tool	EA	5	6
	Tool Size	OD	□ 20×20 (□ 1"×1")	
		ID	ø 32 (1.3")	
TANK CAPACITY	Coolant Tank	ℓ (gal)	120 (31.7)	
	Lubricating Tank	ℓ (gal)	1.8 (0.48)	
POWER SUPPLY	Electric Power Supply	kVA	20	
	Thickness of Power Cable	Sq	OVER 16	
	Voltage	V/Hz	220/60 (200/50)	
MACHINE	Floor Space (L×W)	mm(in)	1,970×1,637 (77.6"×64.4")	2,100×1,435 (82.7"×56.5")
	Height	mm(in)	1,832 (72.1")	1,830 (72")
	Weight	kg(lb)	2,500 (5,512)	2,700 (5,952)
NC	Controller	–	HYUNDAI WIA FANUC i Series [SIEMENS 802D]	

❖ Specifications are subject to change for improvement witho

[] : Option